

For Sale

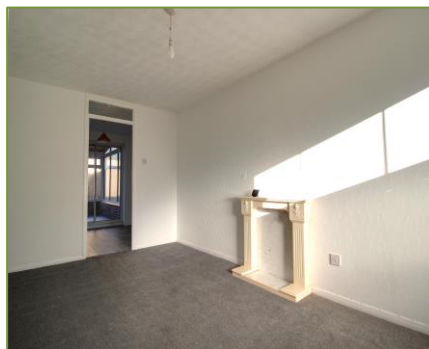


2b-4b Hucknall Road
Nottingham
NG5 1AB

T 0115 962 9770

E Nottingham@go-ps.co.uk

grangerandoaks.co.uk



Woodland Avenue,
Highbury Vale, NG6 9BY

Price: £140,000



Woodland Avenue, Highbury Vale, Nottingham

Price: £140,000



Information

HIGHBURY VALE. This modern two bedroom end-terrace is situated on a popular cul-de-sac with easy access to the city by bus or tram. The property is chain-free, is presented neutrally, and would make for an excellent first time buy, or investment opportunity. The house is double glazed, has electric heating, and the benefit of a conservatory to the rear.

Summary of accommodation

- Chain Free
- Close to Tram
- Gardens Front & Rear
- Garage & Off-Road Car Parking
- Great First Time Buy or BTL Opportunity
- Popular Cul-De-Sac Location

Description

Entrance Lobby

Carpeted. A small cupboard provides storage for coats and shoes.

Living Room

Carpeted. Double glazed window to front. Neutral decor

Dining Kitchen

Fitted kitchen with wall and floor cupboards and roll-top work-surfaces. Electric wall heater. Vinyl Flooring. Doors lead to conservatory.

Conservatory

UPVC Conservatory with doors leading out to the garden. Vinyl flooring.

Stairs & Landing

Carpeted. Doors lead off to bedrooms and bathroom.

Bedroom 1

Double Glazed window to front. Neutral Decor. Electric Heating. Carpeted floor.

Bedroom 2

Double Glazed window to rear. Neutral Decor. Electric Heating. Carpeted floor.

Bathroom

With Three piece bathroom suite and shower over bath. Vinyl flooring. Window to rear elevation.

Outside

Set back from the road behind a mature hedge, the front garden is lawned. To the rear there is a good sized garden with patio and lawn. At the front there is off-road carparking for one car, and a single garage with up and over door.

Woodland Avenue, Highbury Vale

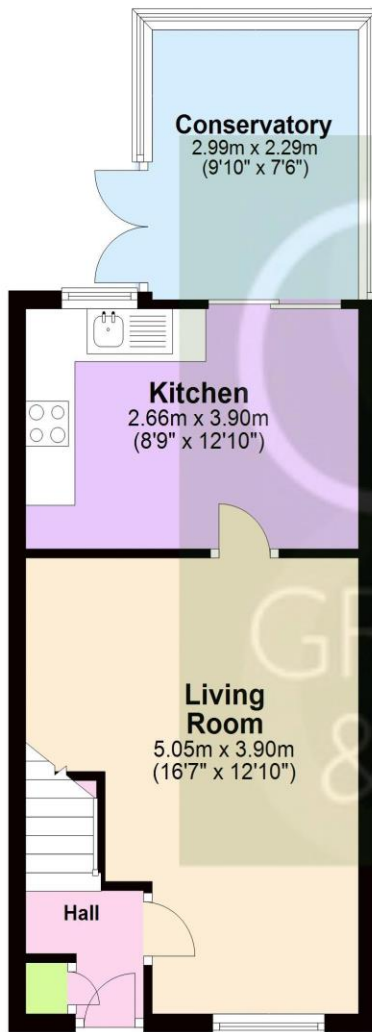
Nottingham, NG6 9BY

Price: £140,000



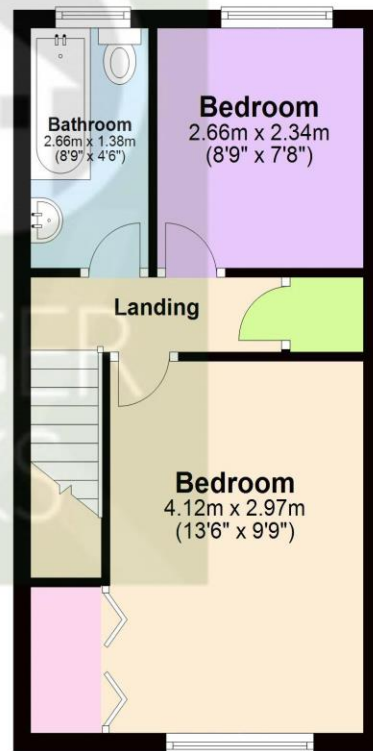
Ground Floor

Approx. 37.5 sq. metres (404.2 sq. feet)



First Floor

Approx. 30.3 sq. metres (326.3 sq. feet)



Total area: approx. 67.9 sq. metres (730.4 sq. feet)

